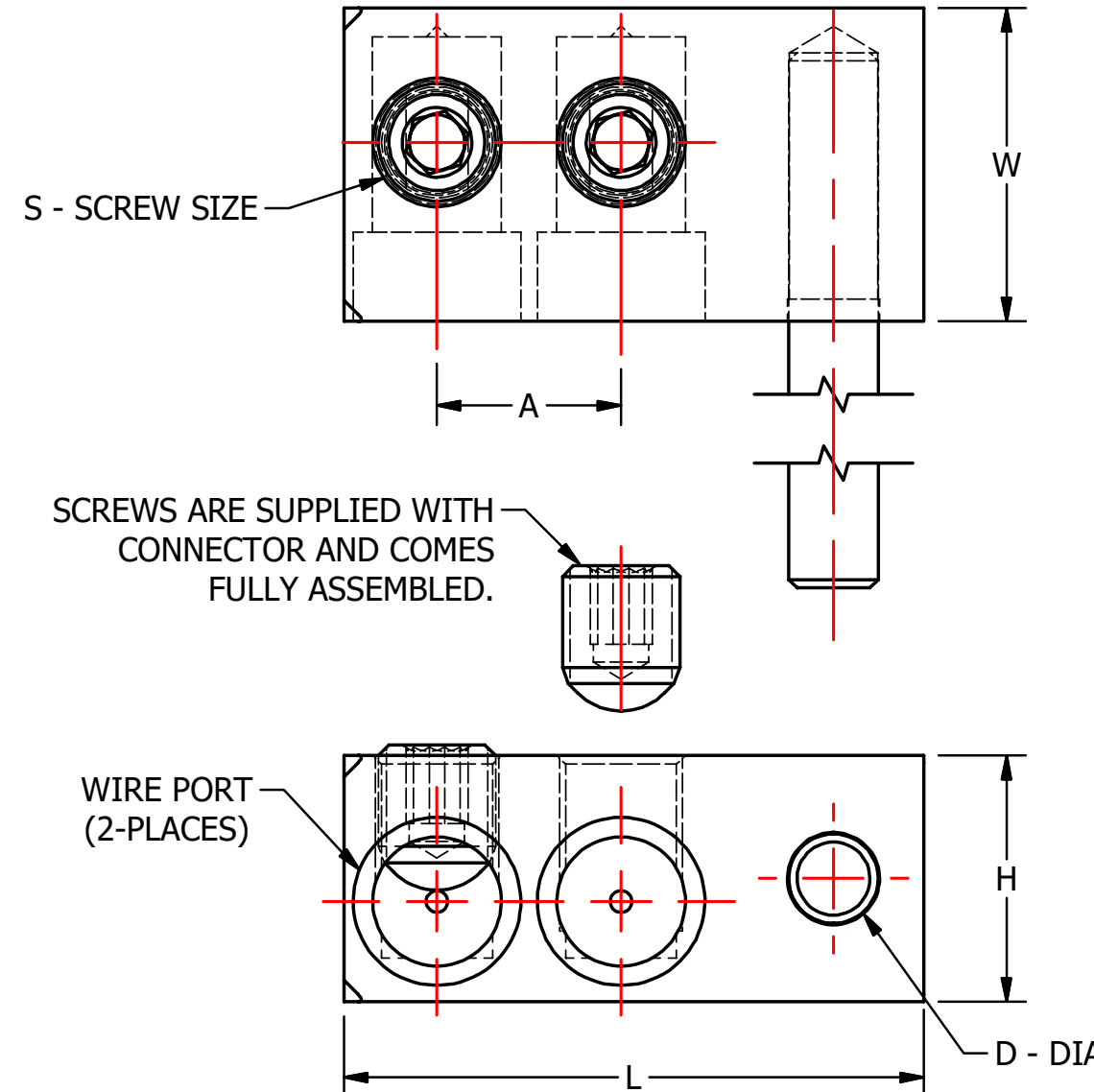
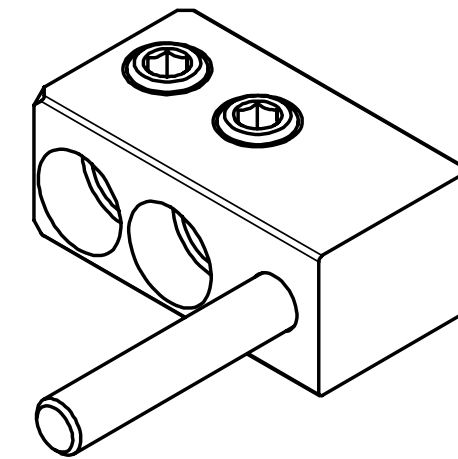


S.NO	CATALOG NUMBER	L	W	H	D	A	S	CONDUCTOR SIZE
1	NPB2-350I	3.24 [82]	1.75 [44]	1.38 [35]	0.50 [13]	1.03 [26]	11/16-16	350 KCMIL-12
2	NPB2-500I	3.59 [91]	2.00 [51]	1.75 [44]	0.75 [19]	1.24 [31]	13/16-16	500 KCMIL-10
3	NPB2-750I	4.00 [102]	2.00 [51]	1.75 [44]	0.75 [19]	1.38 [35]	13/16-16	750 KCMIL-2



DUAL-RATED CONDUCTORS
(ALUMINUM OR COPPER)

FINISH: CLEAR PLATE
MATERIAL: ALUMINUM

					TO ORDER CMC PRODUCTS CALL 1-513-860-4455	DRAWN BY: TS 09-27-19	NAME OF PART: PIN CONNECTOR ASSEMBLY	CAT. NO.: SEE TABLE
					FOR PRODUCT INFO: http://www.cmclugs.com	CHECKED BY:	DWG NO: C58701514I-S (CHARTED)	A
A	NEW DRAWING CREATED		09-27-19	TS		DRAWING NOT TO SCALE		SHEET NO: 1 OF 1
REV.	DESCRIPTION	ECN	DATE	INIT.				

